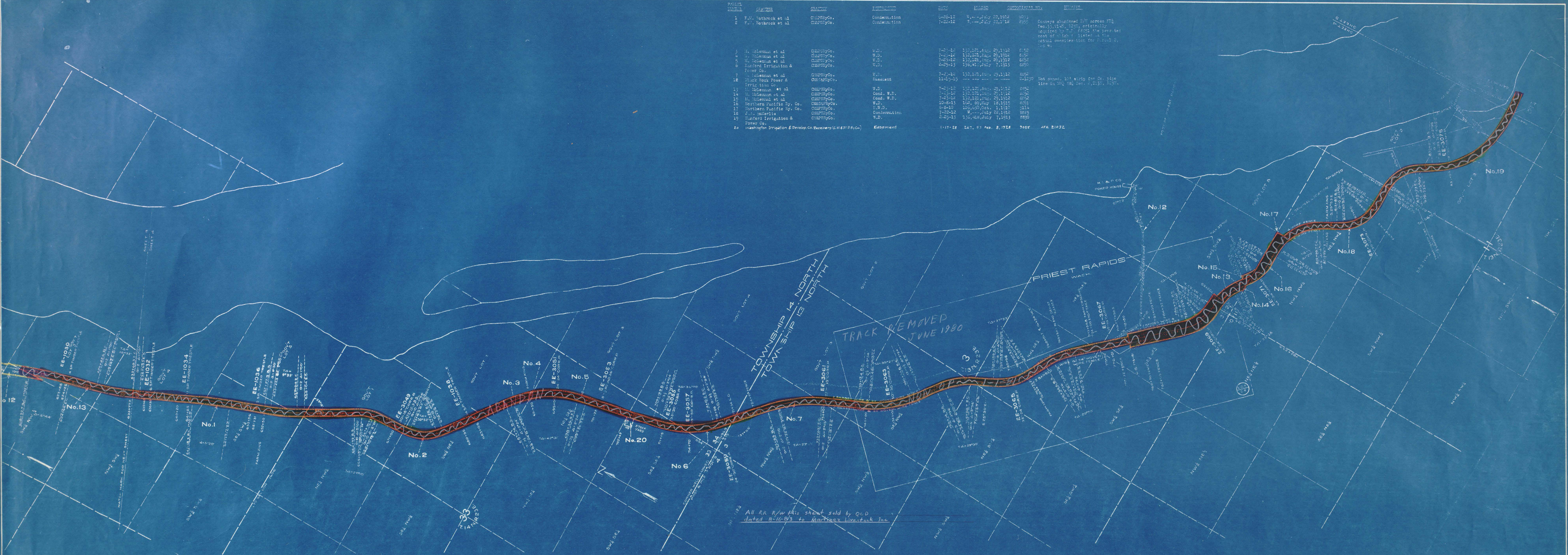


FILE NO.	DATE	RECORDED	SUBJECT	REMARKS
1	8-26-12	7-1-12	F.W. Boharok et al	Conveyance
2	7-20-12	7-1-12	F.W. Boharok et al	Conveyance
3	7-21-12	130,121	W.D.	7-21-12
4	7-21-12	130,121	W.D.	7-21-12
5	7-21-12	130,121	W.D.	7-21-12
6	6-29-12	130,121	W.D.	6-29-12
7	7-21-12	130,121	W.D.	7-21-12
8	11-15-12	130,121	W.D.	11-15-12
9	7-21-12	130,121	W.D.	7-21-12
10	7-21-12	130,121	W.D.	7-21-12
11	10-4-12	100,000	W.D.	10-4-12
12	7-21-12	130,121	W.D.	7-21-12
13	7-21-12	130,121	W.D.	7-21-12
14	7-21-12	130,121	W.D.	7-21-12
15	7-21-12	130,121	W.D.	7-21-12
16	7-21-12	130,121	W.D.	7-21-12
17	7-21-12	130,121	W.D.	7-21-12
18	7-21-12	130,121	W.D.	7-21-12
19	7-21-12	130,121	W.D.	7-21-12
20	1-17-28	247, 83	Feb. 8, 1928	7057



All RR R/W this sheet sold by QCD dated 8-16-83 to Martins Livestock Inc

Sheet No. 2 of 2 sheets of C. M. & St. P. Ry. Co. Main Line from survey station 633+77.2 to survey station 844+37.2

A.E. Lodge
Valuation Engineer

RIGHT OF WAY AND TRACK MAP
CHICAGO, MILWAUKEE & ST. PAUL RY. CO.

OPERATED BY THE
CHICAGO, MILWAUKEE & ST. PAUL RY. CO.
COAST DIVISION
STATION 633+77.2 TO STATION 844+37.2

SCALE: 1 IN. = 4 MILES
OFFICE OF VALUATION ENGINEER
CHICAGO, ILLINOIS

V.W.-B
4

YAKIMA